

# The Journey Home

## CAPITAL CAMPAIGN

A Capital Campaign to build a new center  
for compassionate animal care and education



Binx, BHS Alum



Daffodil, BHS Alum

**Saving Lives. Finding Homes. Inspiring Compassion.**

Dear Friends,

Butte Humane Society has been helping lost, abandoned and abused animals in the Chico area for 107 years. Over those many years, thousands of our furry friends have found the food, shelter, medical care and ultimately their forever homes through the efforts of many caring individuals.

But, while Butte Humane Society is working tirelessly to continue its mission, we are severely limited as to what we can do by the lack of our own facility. We are currently operating out of three rented buildings, all of which are antiquated and severely limited in space.

The need for our own facility is urgent and great! We are launching a capital campaign to raise funds to build a new animal shelter that will offer exciting opportunities to care for more animals and allow us to expand our educational and outreach programs. We envision a place that can serve as a hub for animal welfare in the North State.

This is an exciting time for Butte Humane Society, and we are proud to serve as Co-Chairs for the capital campaign for this worthy effort. I hope you will join us as we work to help Butte Humane Society continue to grow and flourish. And we thank you on behalf of the animals.

Sincerely,

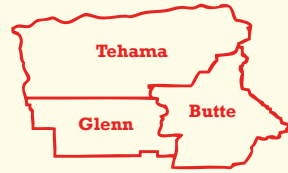
Katie Gonser

Ken Grossman

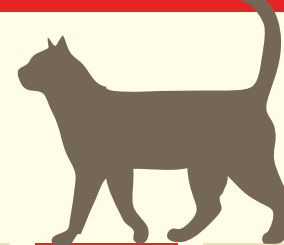


## 2016 Numbers\*

City Animal Shelters in Butte,  
Glenn and Tehama Counties



### 4402 CATS ENTERED SHELTERS



**95**  
Returned  
to Owner

**2886**  
Euthanized

**840**  
Adopted

**325**  
Sent to  
Rescue

*Sadly, only 3% of stray cats in a community ever enter a shelter*

### 6677 DOGS ENTERED SHELTERS



**2240**  
Returned  
to Owner

**1366**  
Euthanized

**1319**  
Adopted

**1433**  
Sent to  
Rescue

**850** + **303** = **The need for  
Dog Bites Cat Bites animal education  
and training classes**

*\* These numbers do not include local, independent rescue organizations like Butte Humane Society and others, that fill a tremendous gap by helping to rehome animals in the North State. There is a pressing need for Butte Humane Society to expand and grow.*

## PROJECT OVERVIEW

Butte Humane Society (BHS) was founded to provide compassionate, temporary care for Butte County's homeless companion animals. For more than 100 years, the organization's mission has been sustained primarily through generous local support. It is with this local support that BHS plans to build a new animal care and adoption center, including a shelter and clinic.

The goal of BHS is to create a community animal resource center that reflects the mission and core values of the organization. The new facility will provide an expanded campus for vital, lifesaving work.

With the completion of this project, BHS will become the **animal welfare hub of Butte County and beyond**—working with other shelters and rescue groups to help reduce euthanasia in Chico and the surrounding communities.

Our goal will be to find homes for approximately 3,000 animals annually.

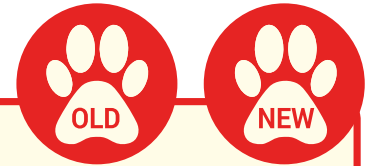
The new animal welfare center will be a friendly space where people and animals can unite in a calm, stress-free environment. The center will include enhanced spaces, such as a welcoming reception lobby, generously sized pet-acquaintance rooms, spacious common areas and education and meeting facilities. With the expanded opportunities for animal welfare and education, Butte Humane Society will be positioned as the leading community center for best practices in humane animal care.



Libby, BHS Alum



Tiramisu, BHS Alum



	ANNUAL	
	OLD	NEW
Adoptions	1,300	2,500
Spay and Neuter Surgeries	2,700	3,800
Spay and Neuter Vouchers	650	1,200
Vaccines	11,700	20,000
Preventative & Wellness Exams	850	2,200
Heartworm Tests	450	1,100
Feline Viral Tests	200	750
Microchips	1,600	2,400
Education Outreach (children)	600	6,000
Pet Therapy Visits (sites)	90	520
Volunteers	200	375
Employees	25	50
Foster Program (animals)	100	450
Internships (Chico and Butte County)	30	45
End of Life Services	100	150

***“A new facility will allow Butte Humane Society to deliver low cost, high quality animal services to not only Butte County but Glenn, Tehama and other surrounding areas. ”***

- Andrea Motta

## THE NEED: \$11 MILLION

Board members, staff, and local experts have conducted shelter research, met with an architect, and designed a state-of-the-art quality facility that is energy efficient and will allow for streamlined services. The new facility will include park-like features for the enjoyment of center animals and guests alike. Unlike the current facility, the building will have three distinct departments (clinic, adoption, education) that are all easily accessible and well-connected for efficiency.

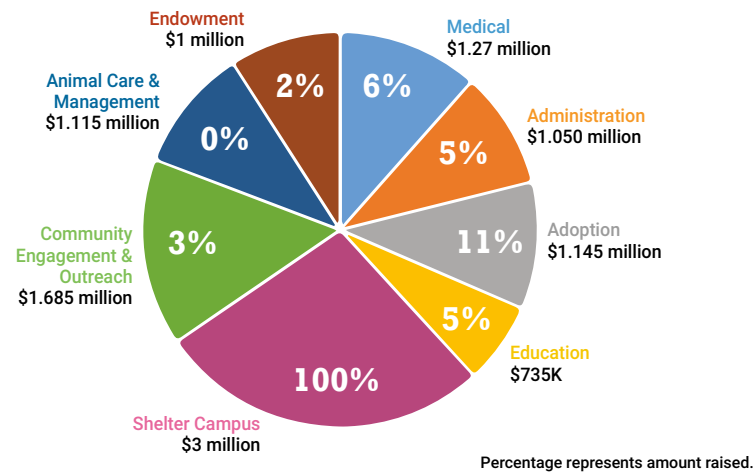
Similar to the transformation of zoos from cages to livable habitats, the trend in animal shelters is to create environments for companion animals that provide a home-like setting more suitable for promoting the animal's adaptability into family life.

The goal of BHS is to find a permanent home for every adoptable animal in its care; the center's overall architecture will allow staff to reduce the length of each animal's stay by enhancing their wellbeing and adoptability. Furthermore, a new model facility will reflect the professionalism of BHS and attract more partners into our network; giving us greater means to find homes for our animals.

The cost to complete BHS's master plan and fully develop, build, and furnish the animal care and adoption center and clinic is estimated to be approximately \$11 million (\$3 million in property already donated). We will raise the money during this capital campaign over the next 18 months.

- 🐾 **3 Million:** Shelter Campus/ Land (Already Donated)
- 🐾 **1 Million:** Endowment Fund
- 🐾 **6-7 Million:** Building and Grounds

## Money Raised



### Medical

Veterinary Medical Center, Exam Rooms, Lab and Pharmacy, Surgery Suites

### Administration

Staff offices, Volunteers, Interns and Career Engagement

### Adoption

Adoption Center, Cat-atorium, Smallville, Get acquainted Dog Rooms, Adoption Counseling, Small Animal Room, Free Roam Cat Rooms, Get acquainted Dog Yard

### Education

Humane Education Center, Humane Education Classrooms, Children's Interactive Experience Room

### Shelter Campus

#### Community Engagement & Outreach

Community Dog Park, Outdoor Patio and Garden, Pet Celebration Garden, Mobile Adoption Trailer and Truck, Dog Pool, Dock and Splash Area, Bereavement Suite, See Spot Shop Retail Area, Relief Fire Hydrants

#### Animal Care & Management

Shelter Activity Yard, Cat Colony Dorms, Doggie Dorms, Kitten and Puppy Nurseries, Cat and Dog Kennels, Dog Wash Station, Feral Cat Holding Station

### Endowment



Lulu, BHS Alum



Rudy, BHS Alum

## OUR FUTURE

- An inviting facility design will encourage visitors to come to BHS for a range of experiences, including education classes, pet care, behavior training, spay/neuter and other medical services.
- An welcoming reception area will greet visitors and provide plenty of space to efficiently manage incoming animals.
- Separate entrances with regular hours will accommodate adoption, clinic patients and all visitors to ensure a safe, peaceful setting.
- State-of-the-art animal housing with accessible viewing options, increased opportunities for human interaction with animals, and the ability for animals to exercise and enjoy fresh air and the outdoors.
- A visitor and pet-friendly dog and cat adoption center featuring community rooms to "get acquainted" with the animals.
- Industry standard water, drainage, floor finishes, sanitation, acoustics, ventilation and holding areas will promote wellness, reduce animal stress and prevent the spread of disease.
- Dogs will have double-sided habitats with access to indoor/outdoor exercise areas. Ample room will enable daily cleaning and disinfection without having to remove the dog, minimizing the risk of cross-contamination.
- Separate housing for feral cats as part of BHS's ongoing effort will support lifesaving trap, neuter, and release programs in the community.

## New Shelter Highlights!

- **10-acre Campus in North Chico**
  - **Animal Medical Center**
  - **Dog and Cat Adoption Center**
  - **Education Center**
  - **Dog Pool, Dock & Splash Area**
  - **Dog Park**
  - **Agility Course**
  - **Kitten and Puppy Nurseries**
- A state-of-the-art veterinary clinic housing BHS's low-cost spay/neuter, vaccination and preventative medical clinic. This will enable staff to perform more lifesaving services and spay/neuter surgeries and provide treatment for shelter animals, as well as continue to offer euthanasia and end-of-life services at a reasonable cost.
  - Habitats for smaller animals (rabbits, Guinea pigs, hamsters, etc.) will accommodate a current unmet demand.
  - A humane education center and conference room will enable staff to offer much needed youth and adult education.
  - Laundry, grooming and food preparation areas will be designed with maximum efficiency.
  - Energy and water conservation will be a significant feature in all aspects of the new center.
  - Retail space will garner revenue for unrestricted income.
  - Administrative staff will have adequate office space to improve efficiencies and productivity.



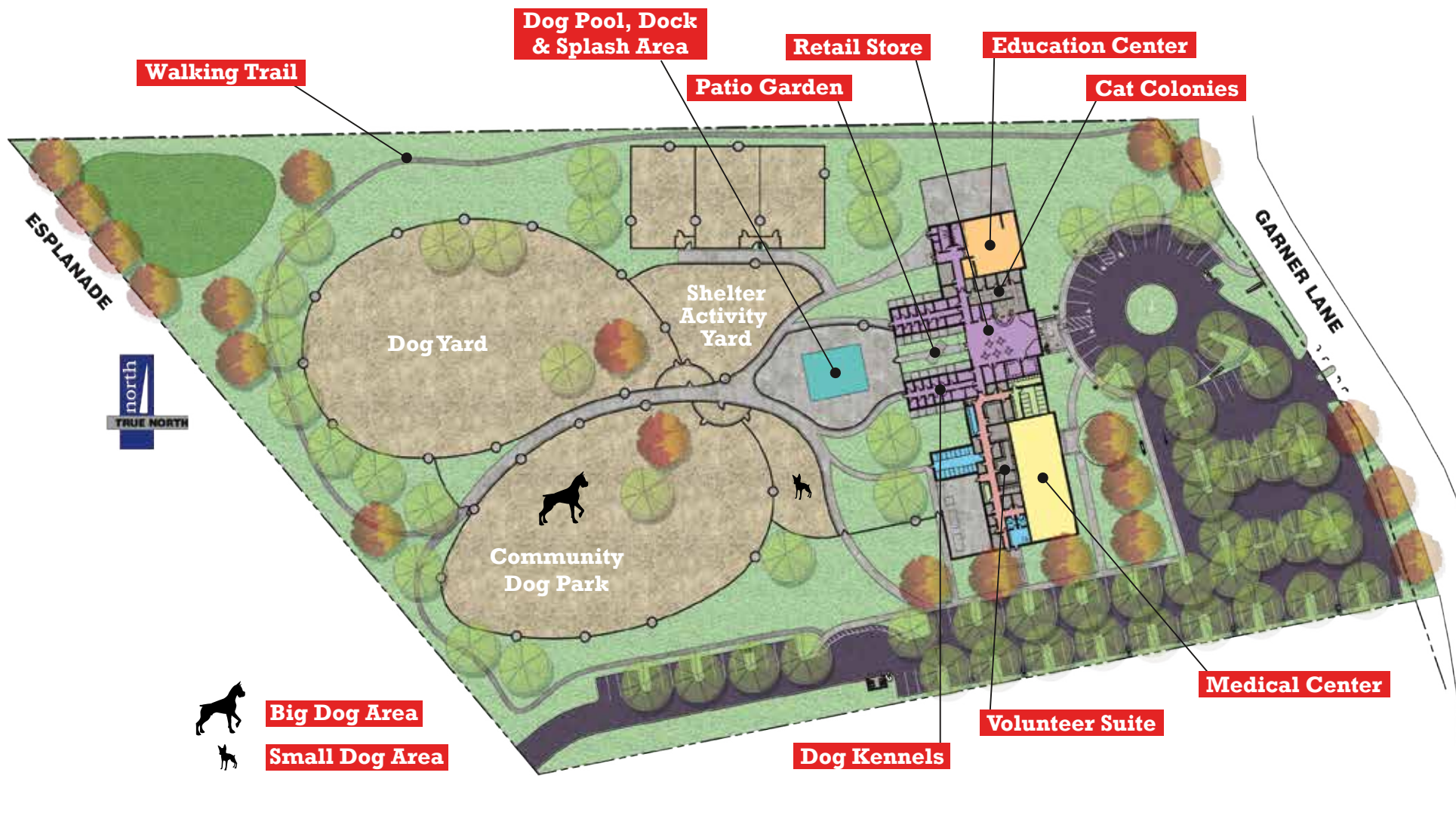




***“The Butte Humane Society provides adoption, animal control, and low-cost veterinary services to the community. They do a tremendous job serving the animals and the community. A new facility would allow them to expand their services and help more animals in need.”*** —Assemblyman, James Gallagher







***“We're not just providing a safe and loving place for animals; we are also creating a space for people in our community to share, learn and grow. This is a one-of-a kind opportunity to help make this happen.”***

— Christy Norton, President, Butte Humane Society Board of Directors

*Artist rendering for display purposes only. Actual site conditions may vary.*



## NAMING OPPORTUNITIES

	\$
Shelter Campus .....	3,000,000
🐾 Veterinary Medical Center .....	1,000,000
Adoption Center .....	500,000
Community Dog Park .....	500,000
🐾 Humane Education & Training Center .....	500,000
🐾 Pet Celebration Garden .....	500,000
🐾 Mobile Adoption Trailer & Truck .....	250,000
Outdoor Patio and Garden .....	250,000
Shelter Activity Yard (outside) .....	250,000
🐾 Dog Pool .....	200,000
🐾 Dock & Splash Area .....	100,000
Cat Colony Dorms (2) .....	100,000 ea.
Doggie Dorms (2) .....	100,000 ea.
"Get Acquainted" Dog Yard (Outside) .....	100,000
Humane Education Classroom (2) .....	100,000 ea.
Indoor "Cat-atorium"—Lobby .....	100,000
Indoor "Smallville" (small dogs)—Lobby .....	100,000
Kitten Nursery .....	100,000
Puppy Nursery .....	100,000

	\$
🐾 Bereavement Suite .....	75,000
🐾 Dog Wash Station .....	75,000
Feral Cat Holding Room .....	75,000
Free Roam Cat Rooms /Catios .....	75,000
Get Acquainted Dog Rooms (2) .....	75,000 ea.
🐾 See Spot Shop Retail Area .....	75,000
Medical Center Exam Rooms (3) .....	50,000 ea.
🐾 Medical Center Lab/Pharmacy .....	50,000
Small Animal Room .....	50,000
Volunteer Suite .....	50,000
Adoption Counseling Area (1 avail., 1 claimed) .....	35,000 ea.
Children's Interactive Experience Room .....	35,000
🐾 Medical Center Surgery Suite (2) .....	35,000 ea.
"Relief" Fire Hydrants 2/plaque .....	5,000 ea.
Bench w/plaque .....	5,000 ea.
Cat Kennel .....	5,000 ea.
Dog Kennel .....	5,000 ea.

Please refer to our pledge form for the most current list of available naming opportunities.  
Items above in gray text have been claimed. Items with 🐾 indicate income generating areas.

***"The needs of cats are different than those of dogs or rabbits, so special attention will be given to match the natural needs of the animals to their spaces. Things like temperature control, sanitation, noise reduction, ventilation and lighting are critical to the wellbeing of the animals and will also help make the new shelter inviting and warm for our visitors, volunteers and employees."***

—Katrina Woodcox, Executive Director



Harry, BHS Alum

## ANIMALS

The goal of our new safe haven will be happy, healthy outcomes for animals in the North State. With 50% more capacity and an inviting adoption facility, many thousands more animals in Butte County and beyond will be helped.

With the tremendous amount of over-breeding, abuse, neglect and abandonment, humane education is the long term answer to reduce these problems. With our new education facility we will reach more people to help them understand how to choose the right pet and how to properly care for and ensure their pet's wellbeing. One person who has this knowledge will spread it to many, so imagine how impactful educating many people will be.

## PEOPLE

It's not just for the animals... lots of people will benefit from our brand new shelter too! It will be a place to volunteer, work, play in a dog park, take classes and attend camps, or adopt a new best friend—and those are just a few of the wonderful “people” benefits of our new shelter.

Studies have consistently proven the benefits of pets to people. Through our adoption education and medical services, we can help people and their pets enjoy their lives together.

And speaking of people: Our cherished and indispensable volunteers will finally have a safe, clean place to enjoy the selfless and rewarding act of helping our precious animals find new loving homes.

## COMMUNITY

By offering lower-cost medical care, a stand-alone facility for education—including children's camps and animal seminars—and three expansive dog parks tailored specifically to animal size and energy level, we will set the tone for humane and responsible pet ownership. This will help significantly improve the overall health and wellbeing of companion animals in our community. This shelter will be a place for both healing and for FUN!



Chloe and Lamar,  
BHS Alums



This exciting project will result in a very special place where animals are saved, where second chances are generously given and where people and animals in Butte County come together to help, heal, learn and love.

While staff and volunteers have done the best they can with the resources they have, we know our capacity to serve will grow exponentially with this new facility.

Our new shelter will be built entirely on gifts from community members who understand and want to support the needs of stray and abused animals here in the North State.

*Can we count  
on your help?*

## HOW TO DONATE

### Gifts of Cash

The easiest and most direct way of supporting Butte Humane Society's Capital Campaign is a gift of cash.

### Gifts of Stock

Avoid capital gains through a gift of highly appreciated stock while taking a full value deduction on your tax returns.

### Recurring Monthly Donation

Recognizing that many caring people may not have the capacity to make a sizable gift at any one time, we suggest the alternative of making a smaller gift on a monthly basis.

### Matching Gifts

Many corporate employers will match their employees' gift to a 501(c)(3) non-profit. If your company has such a program, please request their matching gift form and send the completed form to us.

### Bequest

Leave a legacy of love by remembering Butte Humane Society in your will.

### Services or Items

If you have a professional service or product you wish to donate to the capital campaign, please let us know. Services such as painting, construction, building materials, artwork, etc. will all be considered.



***Celebrate your achievements or honor a beloved family member by naming part of the shelter after yourself or a special person or pet...***

Naming a part or all of the shelter is a wonderful way to leave an enduring reminder of your generosity. Please look two pages back for naming opportunities.





**Butte Humane Society  
Capital Campaign Headquarters**

**PO Box 7654  
Chico, CA 95927**

**530-893-6613**

**CapitalCampaign@ButteHumane.org**

*If you still have questions about the need or layout of our new facility. We encourage you to call our Executive Director who would be happy to give you a tour of our current facility.*

*Join us for the  
journey home*



**Butte Humane Society**

Helping Animals

Since 1911 ♥♥

**Saving Lives. Finding Homes. Inspiring Compassion.**